

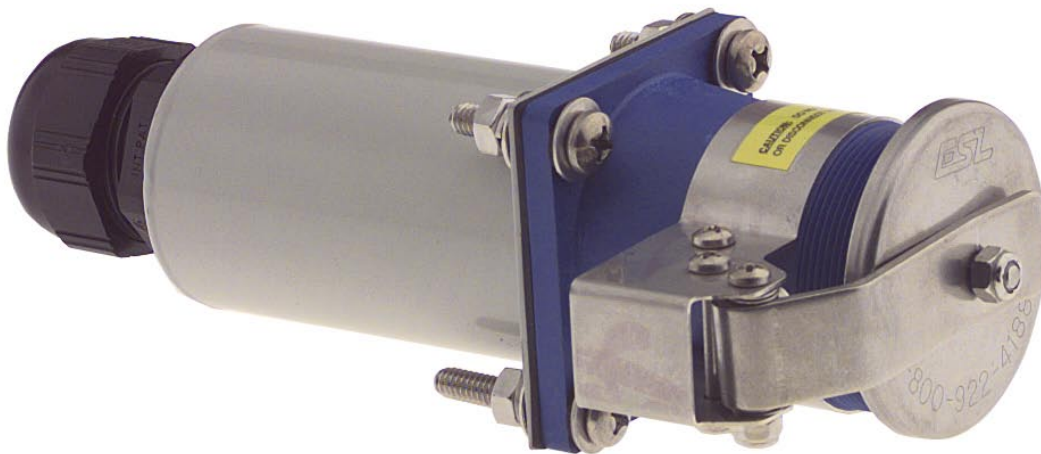
FLANGED CONNECTOR

50AMP 240VAC

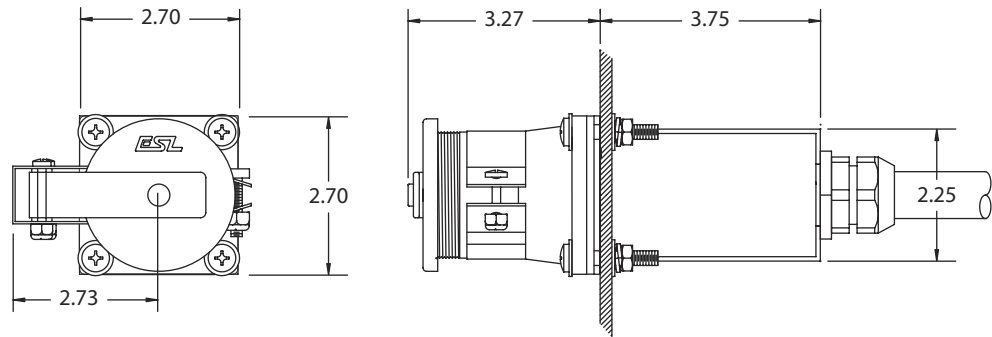
Receptacle with Stainless Steel Back Housing

Catalog No: CF50-240-SP

Item No: 1910-02



- Heavy-duty Flanged Connector for intermodal applications, shipboard, on rail or over-road. Can be used as an In-Line Connector or can be equipment-mounted using the extra long bolts provided.
- Developed specifically for the severe punishment of underslung gen-set applications, mounted on gen-set or directly to trailer chassis.
- Stainless Steel Self-Aligning Snap Cover standard, Watertight Screw Cover optional.



RATING:

Receptacle -	50A 240VAC 3 ϕ + Gr
Environmental -	Meets NEMA 4X
Wire Terminals -	Accepts #8-#10 AWG 4 Conductor SO Cord

MATERIALS:

Stainless Steel -	Terminal Screws, Snap Cover, and all Fasteners
Powder Coated SS -	Rear Housing
Nickel Plated Brass -	Contact Sleeves
Thermoplastic Polyester (PET) -	Receptacle Housing / Insert
Ployamide (Nylon) -	Screw Cover (optional)
Neoprene (CR) -	Gaskets
Buna-N (Nitrile/NBR) -	O-Rings